

My NAME:

VITAL SIGNS:

HOW TO MEASURE:

NORM./AVERAGE

BODY SYSTEM

NAME:

1)

2)

3)

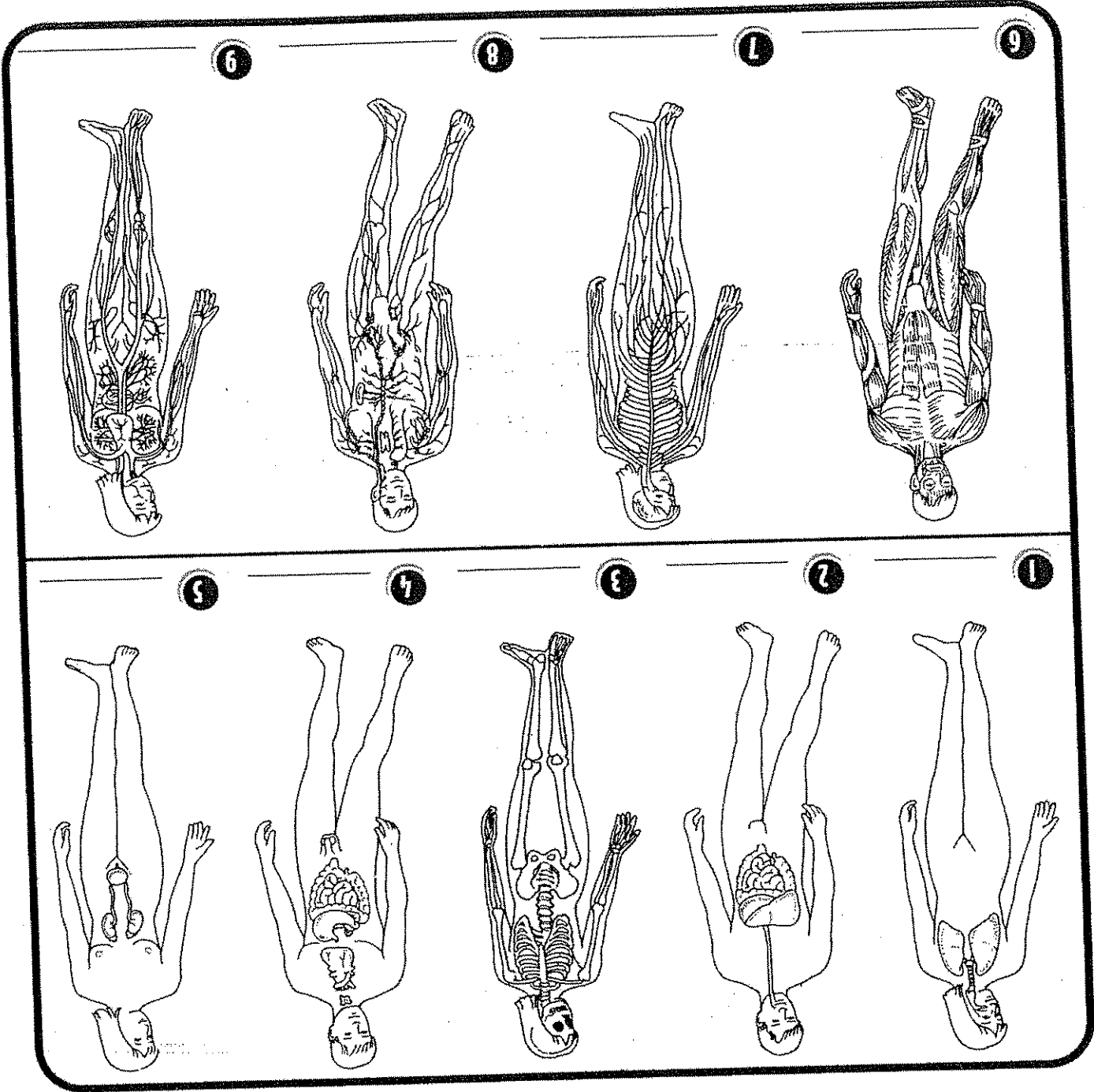
4)

5)

6)

7)

	BODY SYSTEM	NORM./AVERAGE	HOW TO MEASURE:
1)			
2)			
3)			
4)			
5)			
6)			
7)			



- skeletal
- lymphatic
- respiratory
- digestive
- nervous
- urinary
- muscular
- endocrine
- circulatory

Use the terms in the word box to label the illustration of each body system.

All Body Systems

Name _____

Date _____

Identify the Systems

Match each term in the word box to its description.

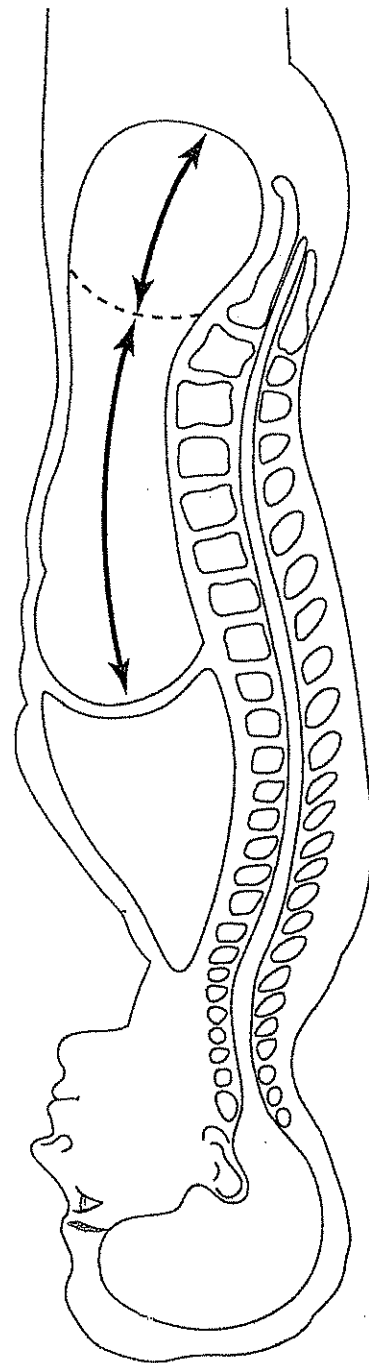
- | | | | | |
|--------------|-------------|---------|-----------|-----------|
| skeletal | respiratory | nervous | muscular | circular |
| reproductive | respirative | urinary | endocrine | lymphatic |

- 1 This system acts as a means of support for the entire body.
- 2 This system works with the circulatory system to transport fluids and filter out bacteria and other foreign invaders.
- 3 This system breaks down food into the nutrients it needs to function. It also carries indigestible food out of the body as waste.
- 4 The main purpose of this system is to create a new living individual.
- 5 This system contains organs that produce, collect, and eliminate urine from the body.
- 6 This system controls movement of the body, the organs, and the beating of the heart.
- 7 This system relays electrical impulses to and from the brain.
- 8 The organs in this system are involved in the exchange of oxygen and carbon dioxide between the body and its environment.
- 9 This is a system of glands that help body functions by the release of hormones.
- 10 This system pumps nutrients and other essential materials to the cells and removes waste products from the cells through a system of vessels.

Color the Graphics

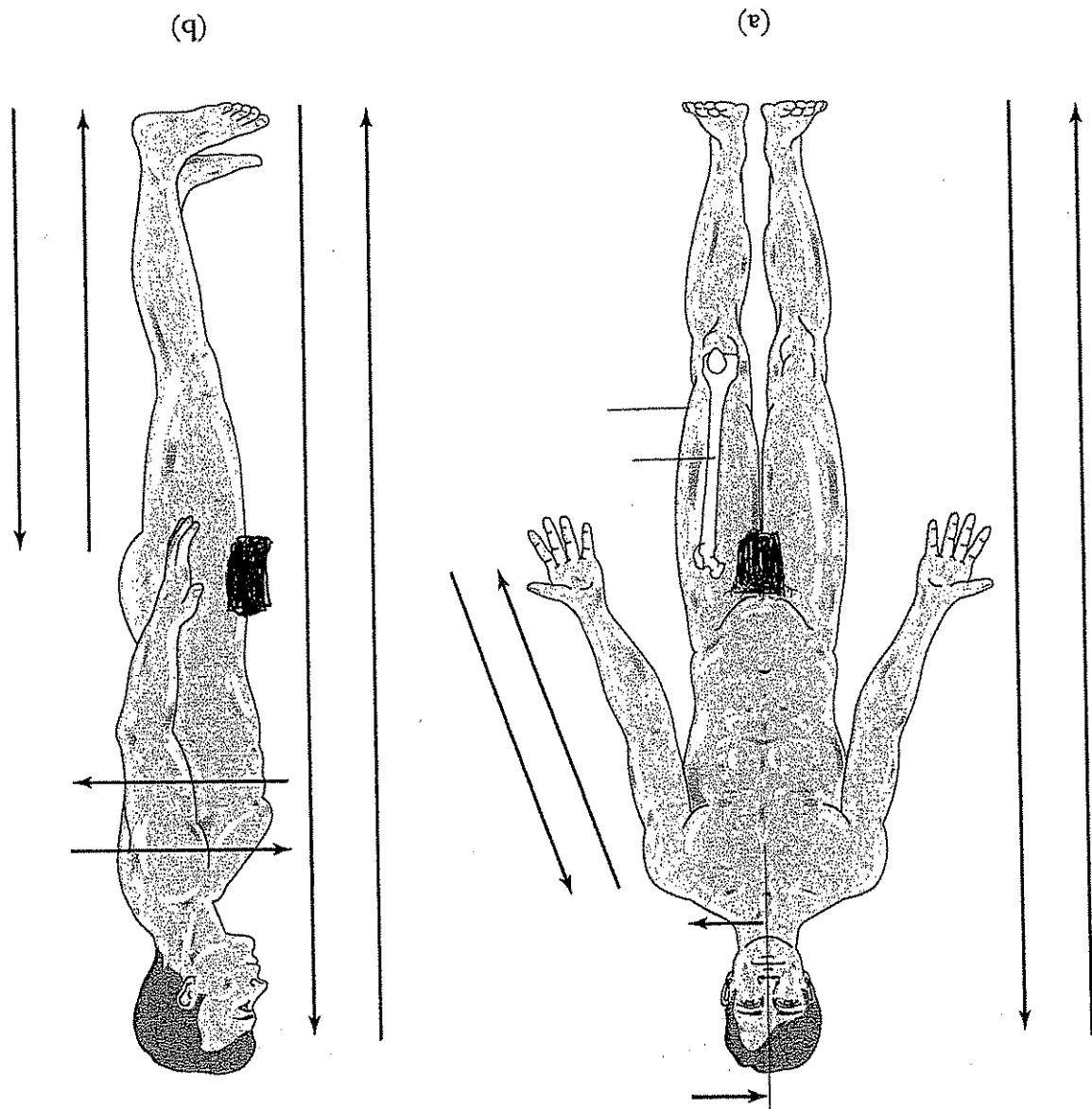
Color this illustration using the following color key:

- cranial – blue
- spinal – yellow
- thoracic – red
- abdominal – green
- pelvic – purple





3



1. superior
2. inferior
3. medial
4. lateral
5. proximal
6. distal
7. anterior
8. posterior

Identify each of the following terms in the illustration below. Write the number of the anatomy part on the line pointing to its location.

Label the Graphics



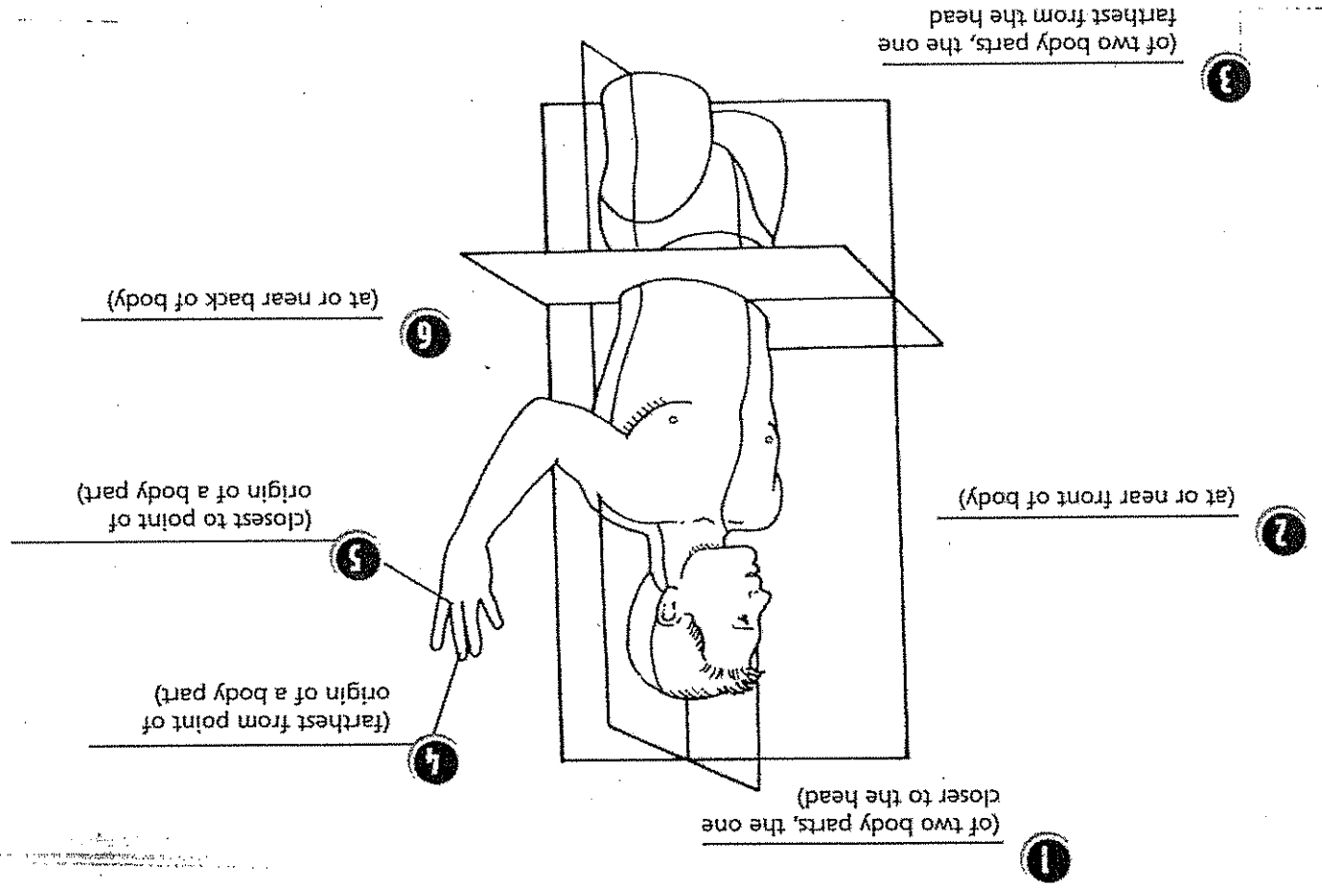
Name: _____

Date: 1/1

Scientific Sections

Words that describe the body, in scientific terms, often get part of their name from where they are found in the body. Imagine that the body is divided front to back and side to side, as shown in the diagram. The use of the terms in the word box will give clues to where the part is found in the body. Use the terms in the word box to label the diagram.

- anterior
- inferior
- posterior
- superior
- distal
- proximal



Use what you now know about locations on the body to complete these sentences.

- 7 You would expect to find the _____ vena cava in the lower half of the body.
- 8 You would expect that the _____ end of the tibia would be farthest from the shoulder.
- 9 You would expect that the _____ vena cava would be in the upper half of the body.
- 10 You would expect that the _____ lobe of the pituitary gland would be the front.

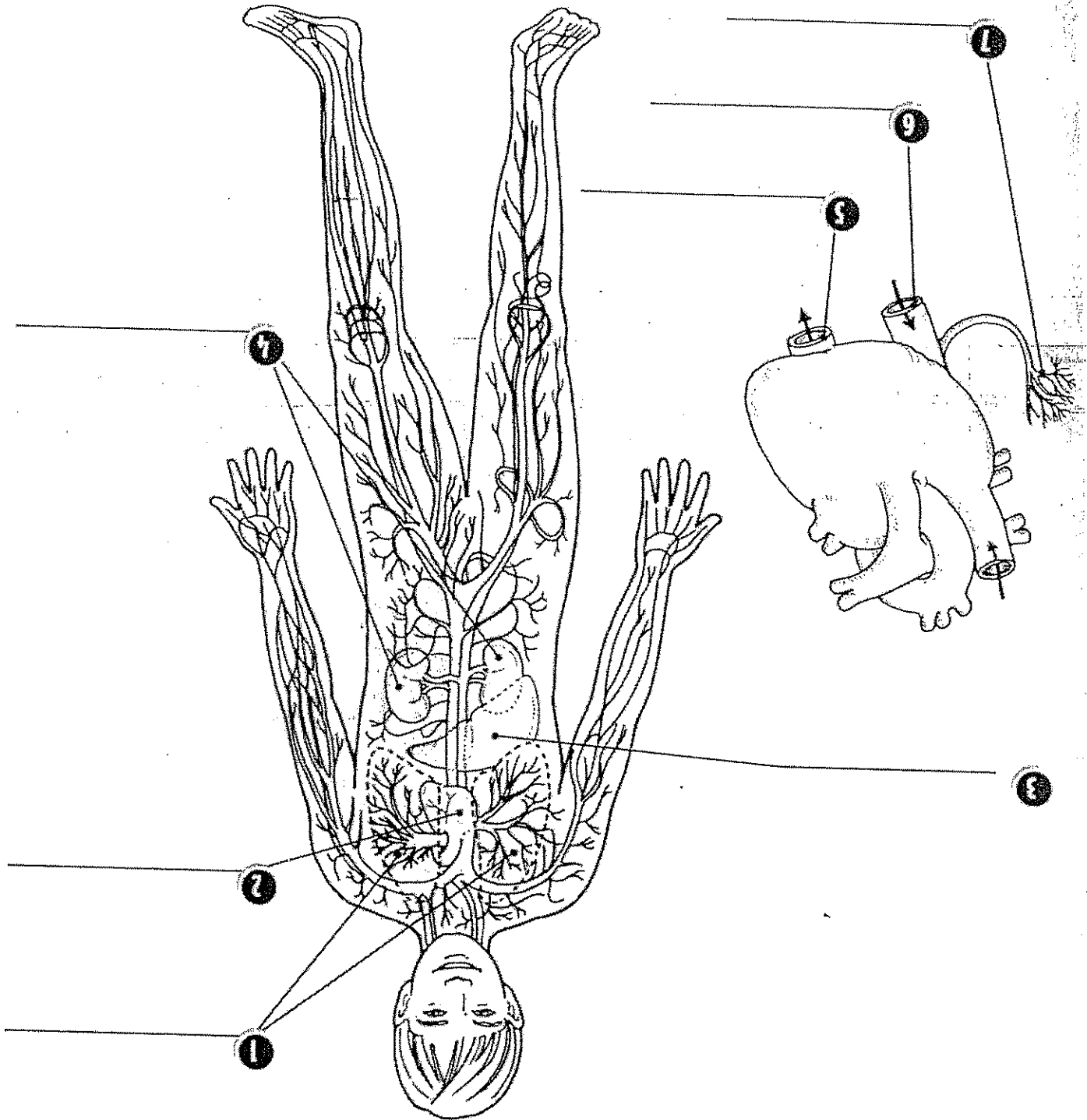
Name _____

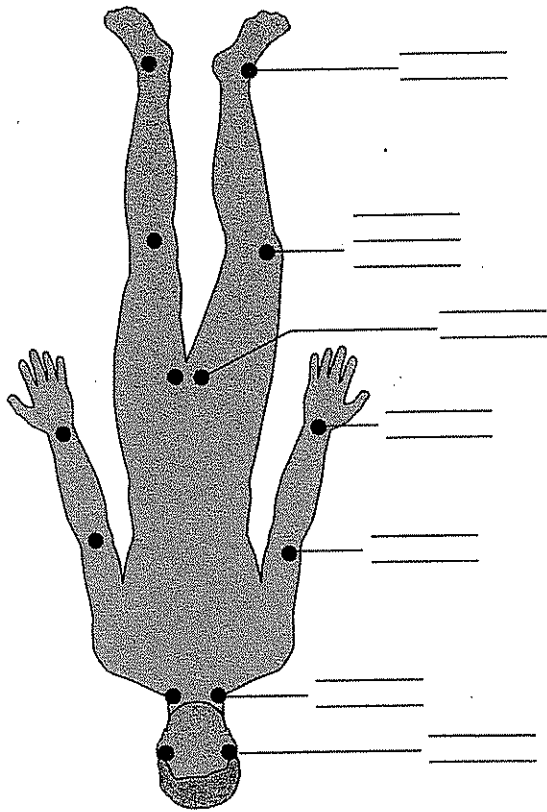
Date _____

The Circulatory System

The circulatory system carries oxygen and nutrients to the cells and carries wastes away from the cells. Use the terms in the word box to label the diagram.

heart liver capillaries lungs artery kidneys vein





Label each of the seven pulse points indicated on the following diagram.

LABELING

Name